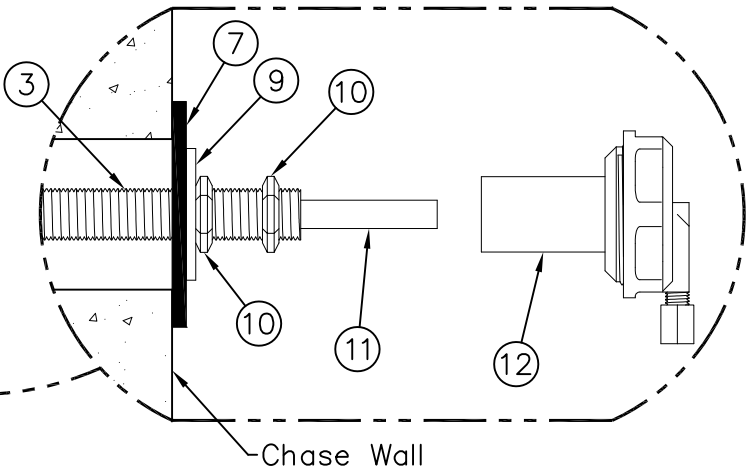
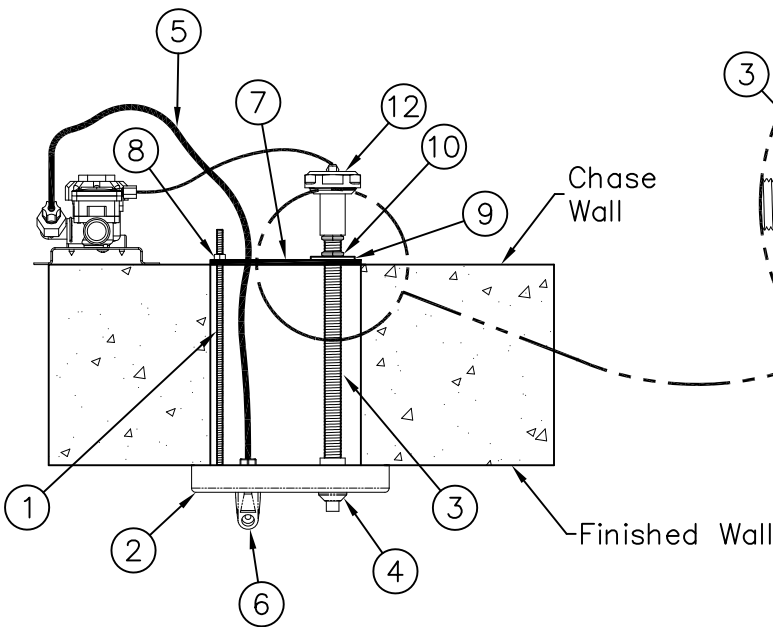
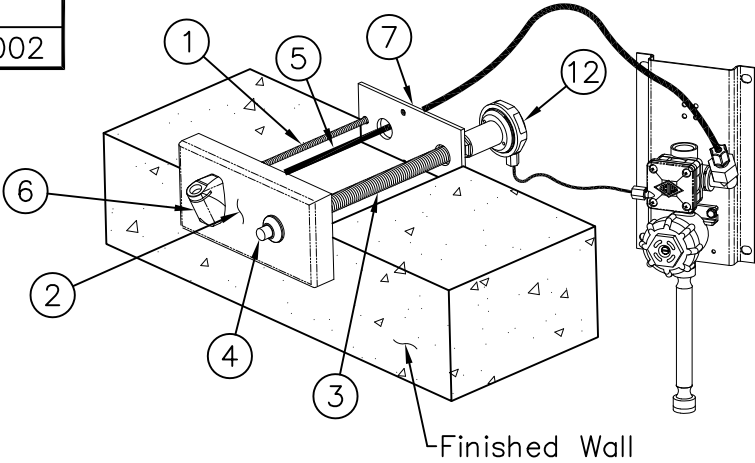




REFERENCE DRAWINGS	
INSTALLATION	NUMBER
SINGLE TEMP AIR-CONTROL VALVE ASSEMBLY (-03)	9955-006-003
-SW WALL SLEEVE & TEMPLATE	9925-221-002




DETAIL SCALED x 3

INSTALLATION INSTRUCTIONS:

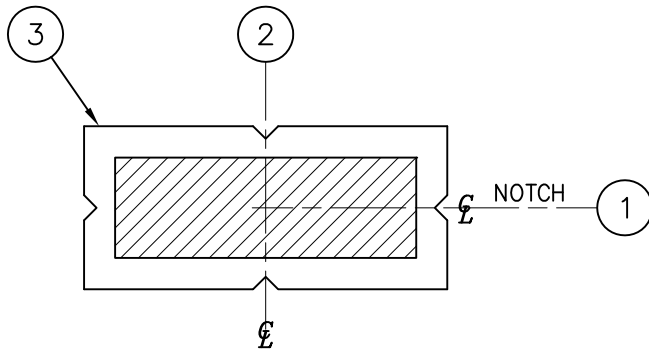
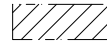
- A-Connect 1/4"-20 UNC Threaded Rod (1) To The Back Of PANEL (2), 3/8" NPS. Conduit (3) To Pushbutton Assembly (4) And 1/4" OD PE Tubbing (5) To Drinking Bubbler (6).
- B-From Fixture Side Slide Assembly Though Wall Blockout.

- C-From Chase Side Secure Back Plate (7) Using 1/4"-20 Hex Nut (8), Washer (9) And 3/8" NPS Lock Nut (10).
- D-When Secure Insert Pushrod (11) Into Conduit (3) And Attach Actuator Assembly (12) To Conduit (3) And Secure With Locknut (10).

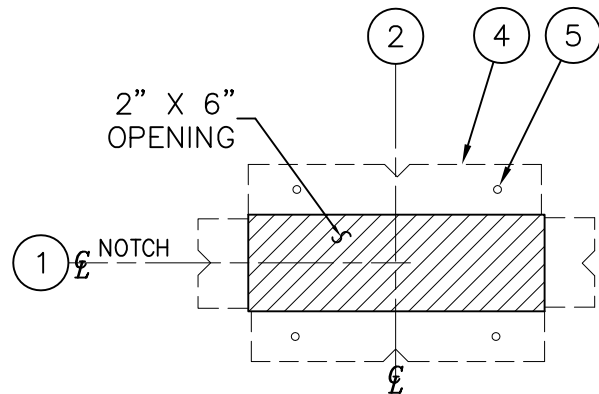
 ACORN ENGINEERING COMPANY P.O. BOX 3527 INDUSTRY, CA. 91744 (626) 336-4561 FAX (626) 961-2200	TITLE *1674 DRINKING BUBBLER		
	MANUFACTURE DATE JUNE 1974 TO PRESENT	DATE ISSUED 11/13/09	DRAWING NUMBER 9925-192-001
		DATE REVISED	



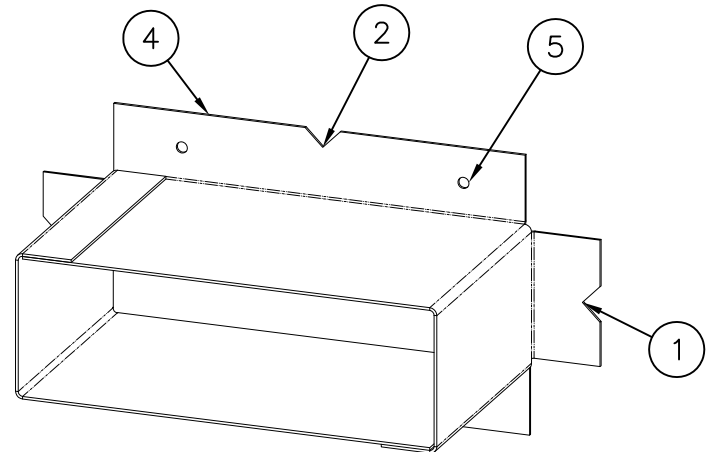
BOTH VIEWS ARE FROM CELL SIDE
 SHADED AREAS ARE REQUIRED WALL OPENINGS



METAL TEMPLATE (-MT)



WALL SLEEVE (-SW)



WALL SLEEVE (-SW)

SCALED X 1-1/2

INSTALLATION INSTRUCTIONS

METAL TEMPLATES (-MT)

TEMPLATES ARE USED TO LAYOUT REQUIRED WALL OPENINGS FOR SUBSEQUENT FLAME CUTTING OR CORE DRILLING.

- A- STRIKE A HORIZONTAL CHALKLINE ① ON THE WALL ABOVE THE FINISHED FLOOR. THIS WILL LOCATE CENTERLINE FOR HORIZONTAL NOTCHES ON TEMPLATE.
- B- STRIKE A VERTICAL CHALKLINE ② ON THE WALL TO INDICATE CENTERLINE OF FIXTURE. THIS WILL LOCATE FOR VERTICAL NOTCHES ON TEMPLATE.
- C- PLACE TEMPLATE ③ AGAINST THE WALL, LOCATING NOTCHES AT CHALKLINES. MARK FOR WALL OPENINGS.

WALL SLEEVES (-SW)

SLEEVES ARE INSTALLED IN FORMS (USING NAIL HOLES ⑤ PROVIDED) OR GROUTED INTO BLOCK WALLS, BECOMING A PERMANENT PART OF THE WALL.

NOTE: FOR POURED WALL CONSTRUCTION, TEMPORARY BRACING SHOULD BE INSTALLED WITHIN SLEEVE OPENING TO PREVENT DEFORMATION TO SLEEVE WHICH MAY OCCUR DURING POUR. DO NOT POUR CONCRETE DIRECTLY ON TOP OF WALL SLEEVE.

- A- INSTALL SLEEVE WITH FLANGE ④ ON CHASE SIDE OF WALL.
- B- TOP AND BOTTOM NOTCHES LOCATE VERTICAL CENTERLINE ② OF BUBBLER.
- C- SIDE NOTCHES ① LOCATE CENTERLINE OF CAT. #1674.



ACORN ENGINEERING COMPANY
 P.O. BOX 3527 INDUSTRY, CA. 91744
 (626) 336-4561 FAX (626) 961-2200

TITLE

SLEEVES AND TEMPLATES (CAT. #1674)

MANUFACTURE DATE

JUNE 1974

TO PRESENT

DATE ISSUED

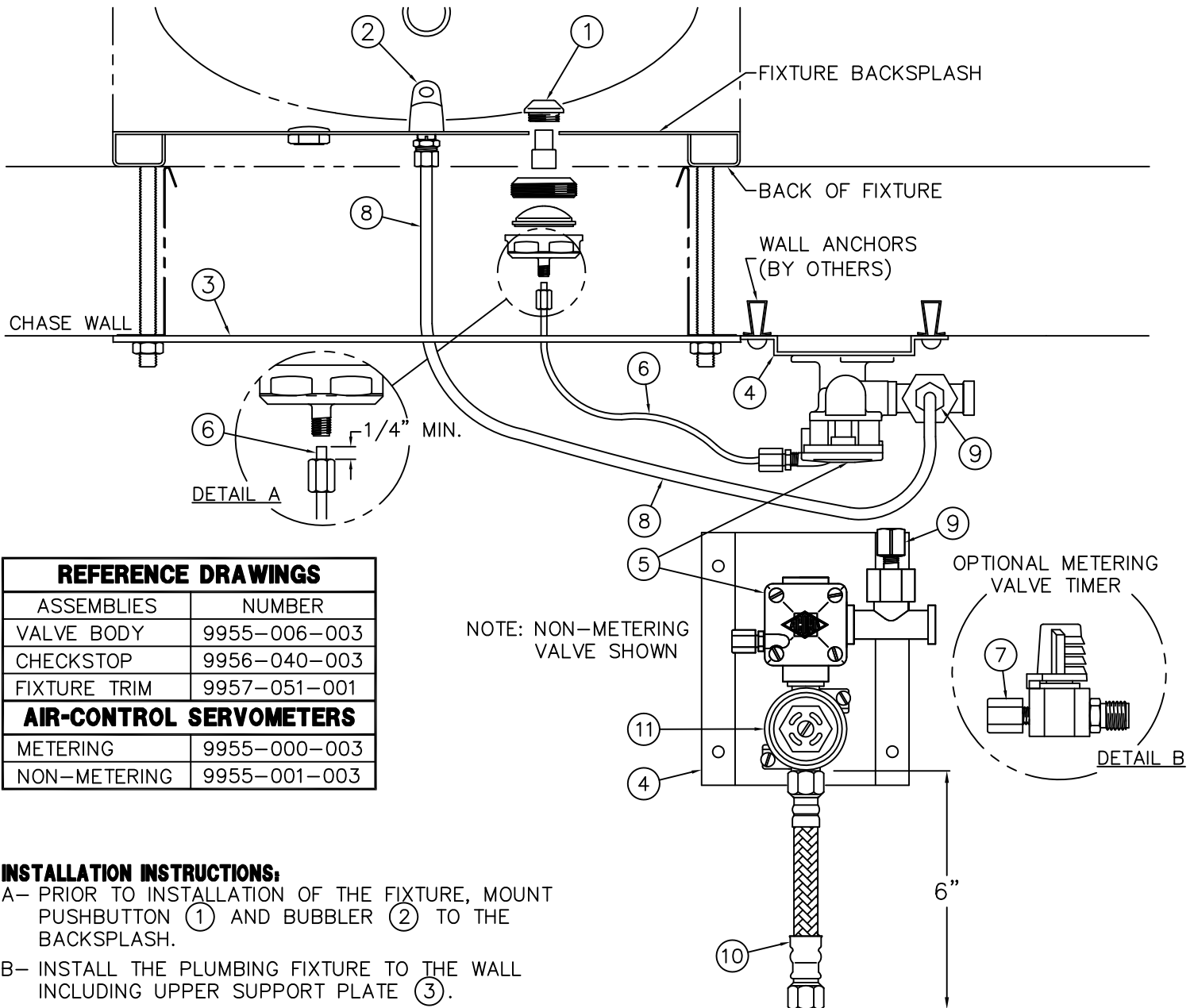
03/01/90

DATE REVISED

11/13/09

DRAWING NUMBER

9925-221-002



REFERENCE DRAWINGS

ASSEMBLIES	NUMBER
VALVE BODY	9955-006-003
CHECKSTOP	9956-040-003
FIXTURE TRIM	9957-051-001
AIR-CONTROL SERVOMETERS	
METERING	9955-000-003
NON-METERING	9955-001-003

INSTALLATION INSTRUCTIONS:

- A- PRIOR TO INSTALLATION OF THE FIXTURE, MOUNT PUSHBUTTON ① AND BUBBLER ② TO THE BACKSPLASH.
- B- INSTALL THE PLUMBING FIXTURE TO THE WALL INCLUDING UPPER SUPPORT PLATE ③.
- C- LOCATE AS REQUIRED AND MOUNT THE AIR-CONTROL VALVE ASSEMBLY ④. MAXIMUM ALLOWABLE DISTANCE BETWEEN PUSHBUTTON ① AND AIR-CONTROL SERVOMOTOR ⑤ IS 10 FEET. WALL ANCHORING HARDWARE ARE BY OTHERS.
- D- CONNECT 1/8" O.D. POLYETHYLENE AIR LINE ⑥ TO PUSHBUTTON ① AND SERVOMOTOR ⑤. HAND TIGHTEN USING FERRULE NUT PROVIDED. SEE DETAIL A. NOTE: WHEN METERING VALVE IS SPECIFIED, AIR LINE CONNECTS DIRECTLY TO VALVE TIMER ⑦. SEE DETAIL B.
- E- CONNECT 1/4" O.D. POLYETHYLENE WATER LINE ⑧ TO BUBBLER ② AND COMPRESSION NUT ⑨. HAND TIGHTEN USING FERRULE NUT PROVIDED.

- F- AFTER THOROUGHLY FLUSHING THE SUPPLY LINE, MAKE-UP 1/2" NPS FEMALE SUPPLY CONNECTION. NOTE: SUPPLY INLET CONNECTION WILL ACCOMODATE 1/2" NPT MALE ADAPTER. THREAD FLEX CONNECTOR HOSE (10) TO CHECKSTOP (11) AND SUPPLY STUB OUT.
- G- SEE APPROPRIATE SERVOMOTOR REFERENCE DRAWING FOR DETAILS AND TIMING INSTRUCTIONS.

NOTE:

MAXIMUM RECOMMENDED WORKING WATER PRESSURE IS 100 PSI; TEMPERATURE IS 130° F; OUTLET TEMPERATURE IS RECOMMENDED AT A MAXIMUM OF 105° F.

WARNING:

PRIOR TO MAKING INSTALLATION, SUPPLY LINES MUST BE FLUSHED OF ALL FOREIGN MATERIAL SUCH AS PIPE DOPE, CHIPS, SOLDER, ETC. VALVE MUST BE DRAINED PRIOR TO BEING SUBJECTED TO FREEZING TEMPERATURES. MAXIMUM RECOMMENDED OUTLET WATER TEMPERATURE IS 105° F.



ACORN ENGINEERING COMPANY
P.O. BOX 3527 INDUSTRY, CA. 91744
(626) 336-4561 FAX (626) 961-2200

TITLE

(-03 SERIES) SINGLE TEMP AIR-CONTROL VALVE ASSEMBLY -NEW STYLE

MANUFACTURE DATE

**SEPTEMBER 1995
TO PRESENT**

DATE ISSUED

11/01/95

DATE REVISED

07/15/10

DRAWING NUMBER

9905-001-003